



# COMUNE DI QUARRATA

Provincia di Pistoia

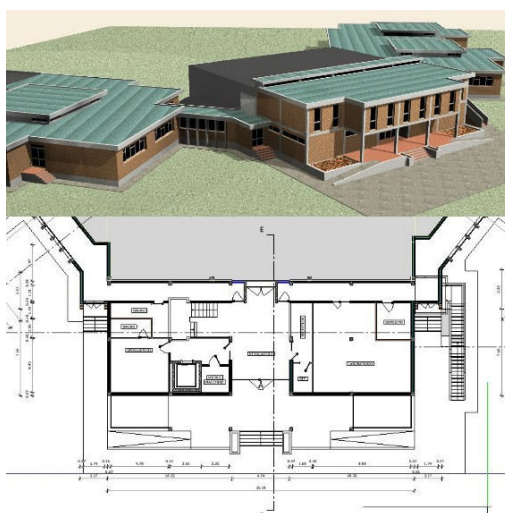
*Area Valorizzazione e Sviluppo del Territorio*

*Servizio Lavori Pubblici*

## **Intervento di efficientamento energetico tramite sostituzione degli infissi presso la scuola secondaria di I° grado “M. Nannini” di Vignole a Quarrata**

**I° lotto**

### **PROGETTO DEFINITO - ESECUTIVO** **Fascicolo elaborati grafici relativi allo Stato Attuale** **(Planimetrie – Distribuzione dei locali – Abaco infissi)**



Stazione Appaltante

**Comune di Quarrata (PT)**

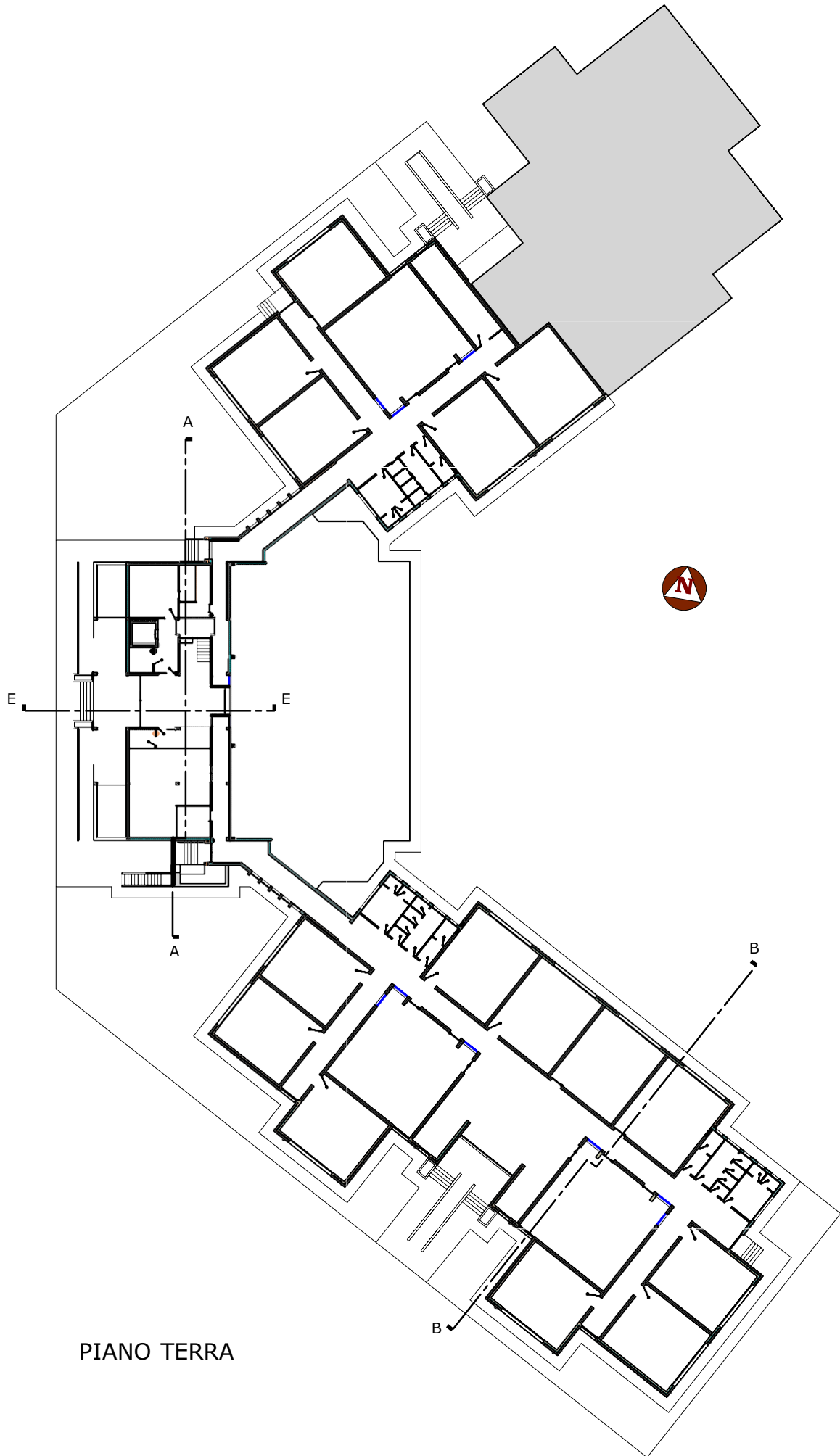
Progettista

**Geom. Fabiana Baldi**

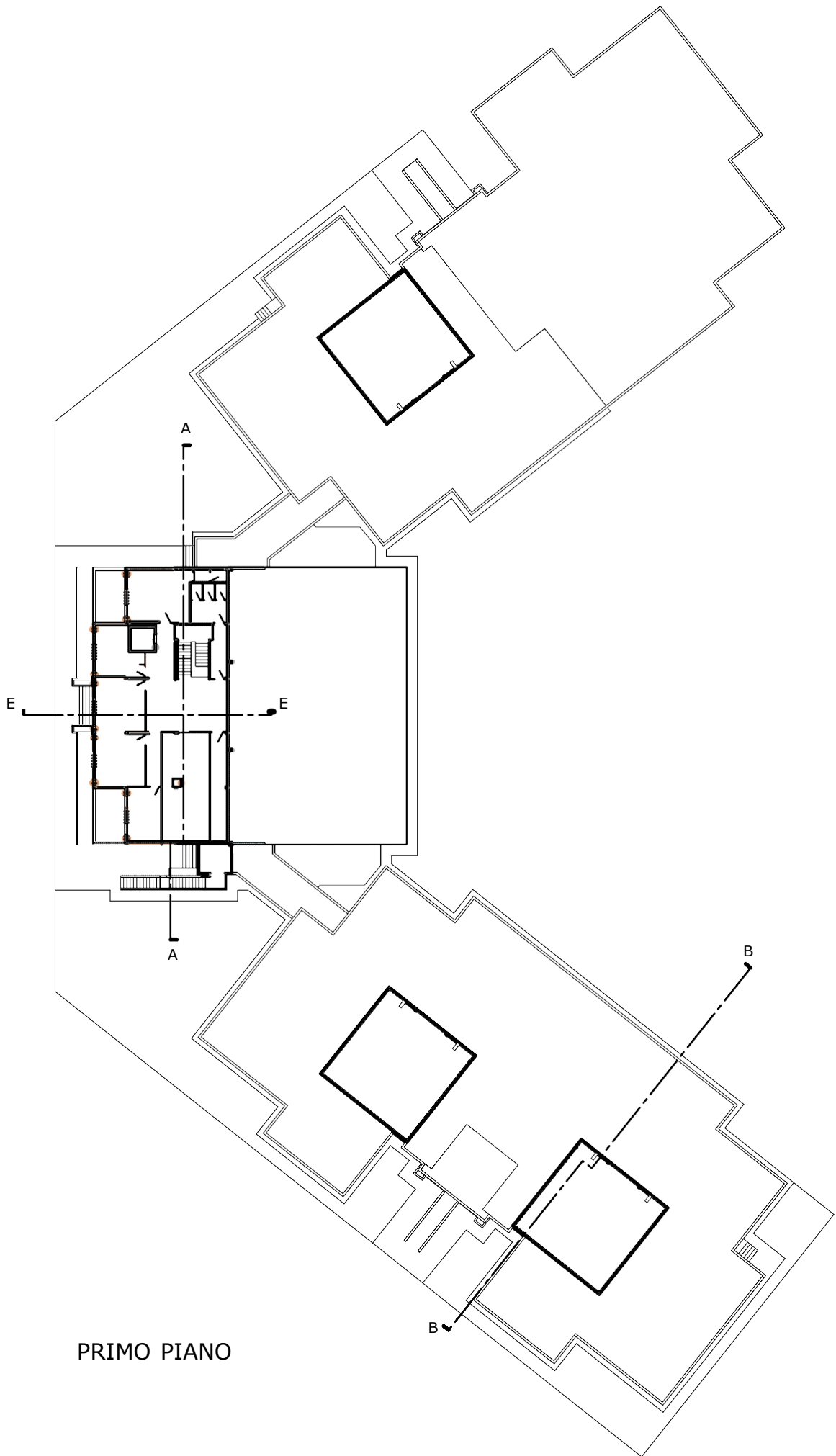
Responsabile Unico del Procedimento

**Arch. Riccardo Pallini**

febbraio 2019



PIANO TERRA



PRIMO PIANO



MODELLO RENDERIZZATO



ABACO FUNZIONALE VOLUMI E SUPERFICI DEGLI AMBIENTI INTERNI - 1



Overview oggetti

Progetto: SCUOLA MEDIA VIGNOLE - PIANO TERRA

Data / ora: 01/01/2018 / 12:02

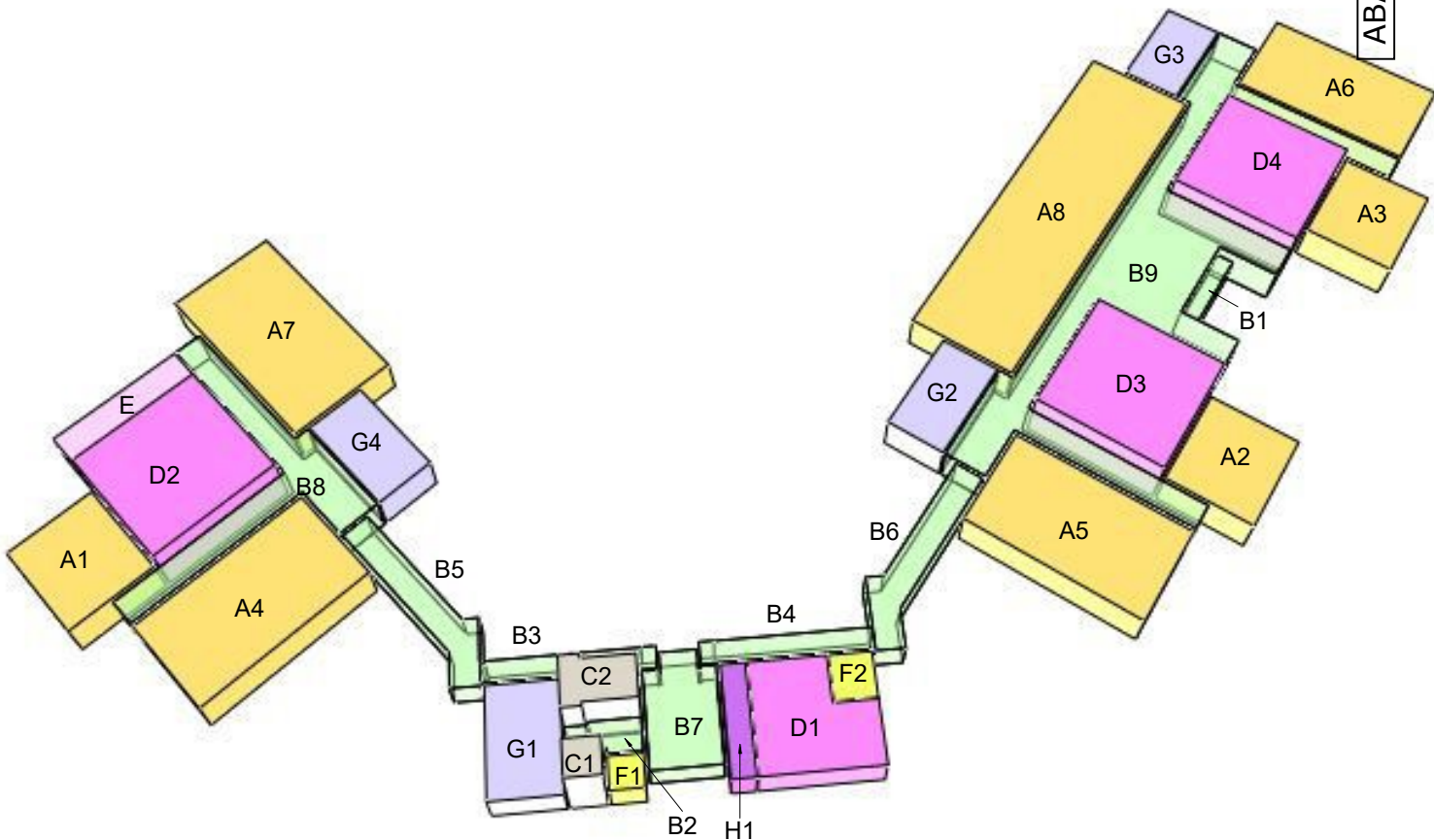
segue

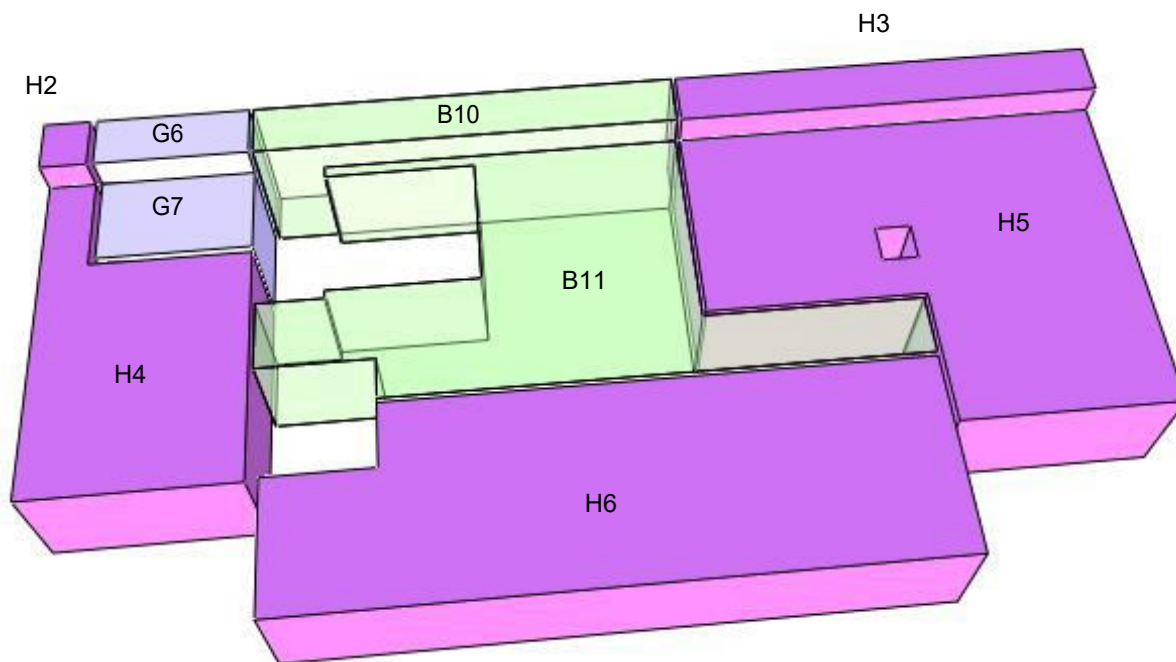
ID componente	Tipologia d'uso	Quantità
A1	AULE	153,30 m³
A2	AULE	153,30 m³
A3	AULE	155,54 m³
A4	AULE	313,16 m³
A5	AULE	313,16 m³
A6	AULE	313,16 m³
A7	AULE	367,59 m³
A8	AULE	724,44 m³
B1	DISTRIBUZIONE ORIZZONTALE	20,90 m³
B2	DISTRIBUZIONE ORIZZONTALE	27,38 m³
B3	DISTRIBUZIONE ORIZZONTALE	47,98 m³
B4	DISTRIBUZIONE ORIZZONTALE	49,42 m³
B5	DISTRIBUZIONE ORIZZONTALE	77,78 m³
B6	DISTRIBUZIONE ORIZZONTALE	81,32 m³
B7	DISTRIBUZIONE ORIZZONTALE	86,78 m³
B8	DISTRIBUZIONE ORIZZONTALE	235,05 m³
B9	DISTRIBUZIONE ORIZZONTALE	796,90 m³
C1	DISTRIBUZIONE VERTICALE	36,09 m³
C2	DISTRIBUZIONE VERTICALE	89,51 m³

segue

ID componente	Tipologia d'uso	Quantità
D1	LABORATORI	149,22 m³
D2	LABORATORI	408,77 m³
D3	LABORATORI	408,77 m³
D4	LABORATORI	408,77 m³
E	LOCALI DI DEPOSITO	86,81 m³
F1	LOCALI TECNICI	14,27 m³
F2	LOCALI TECNICI	25,64 m³
G1	SERVIZI	104,38 m³
G2	SERVIZI	107,24 m³
G3	SERVIZI	107,24 m³
G4	SERVIZI	107,51 m³
H1	UFFICI	35,19 m³

Riepilogo	m³
AULE	2493,65
DISTRIBUZIONE ORIZZONTALE	1423,52
DISTRIBUZIONE VERTICALE	125,596
LABORATORI	1375,525
LOCALI DI DEPOSITO	86,808
LOCALI TECNICI	39,908
SERVIZI	461,562
UFFICI	35,194





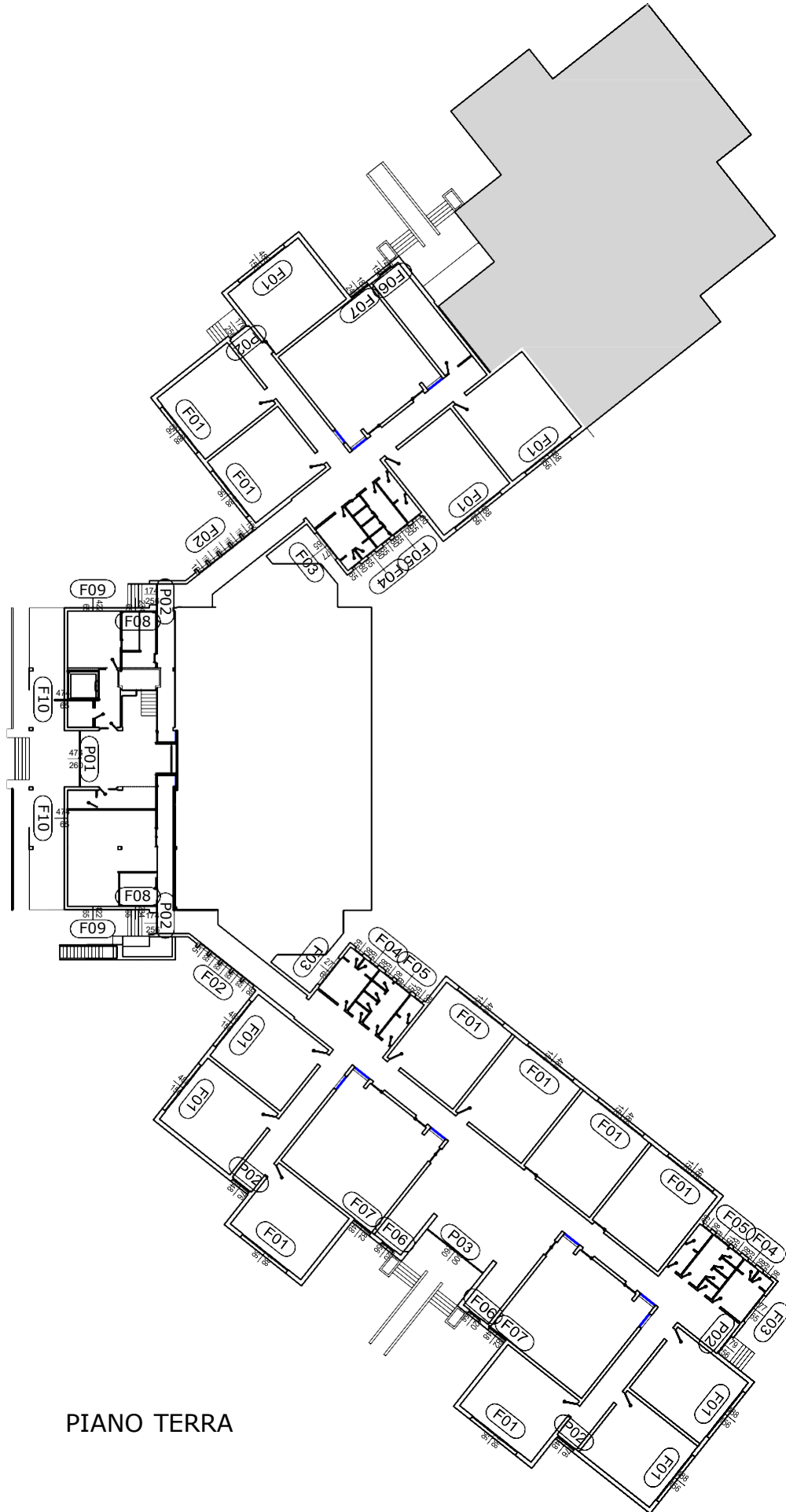
**Overview oggetti**

Progetto: SCUOLA MEDIA VIGNOLE - PIANO TERRA

Data / ora: 01/01/2018 / 12:19

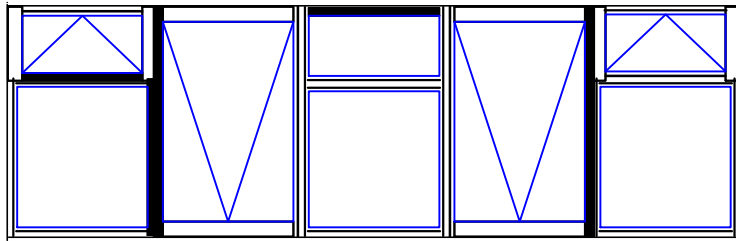
ID componente	Tipologia d'uso	Quantità
B10	DISTRIBUZIONE ORIZZONTALE	45,59 m³
B11	DISTRIBUZIONE ORIZZONTALE	143,99 m³
G6	SERVIZI	16,32 m³
G7	SERVIZI	21,47 m³
H2	UFFICI	4,94 m³
H3	UFFICI	45,75 m³
H4	UFFICI	86,28 m³
H5	UFFICI	181,61 m³
H6	UFFICI	184,87 m³

Riepilogo	m³
DISTRIBUZIONE ORIZZONTALE	189,574
SERVIZI	37,792
UFFICI	503,449

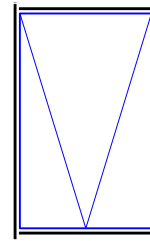


PIANO TERRA

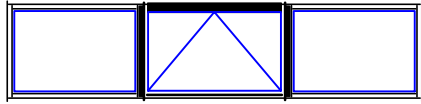




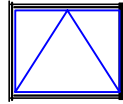
F01 4.88 x 1.56h



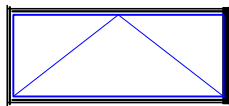
F02 1.00 x 1.55h



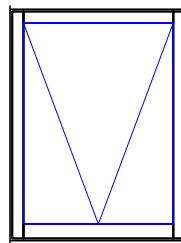
F03 2.77 x 0.65h



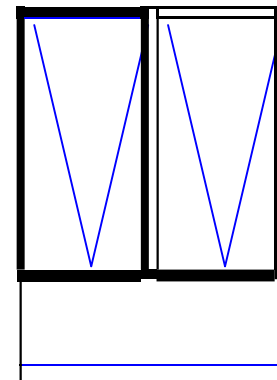
F04 0.80 x 0.65h



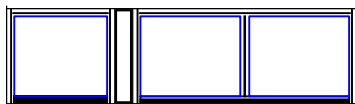
F05 1.50 x 0.65h



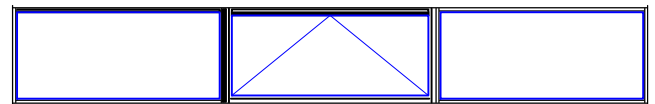
F06 1.20 x 1.56h



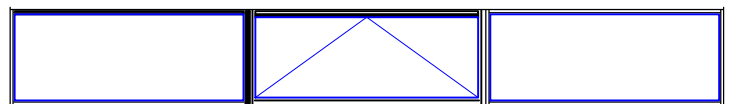
F07 1.82 x 2.48h



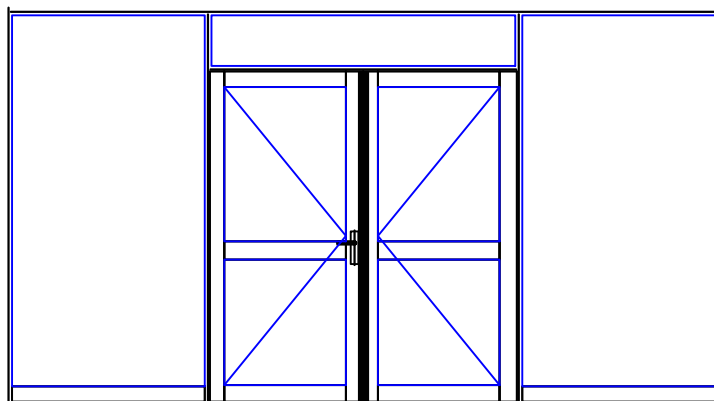
F08 2.33 x 0.65h



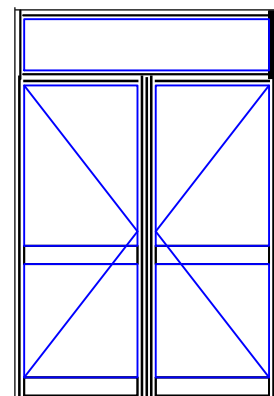
F09 4.22 x 0.65h



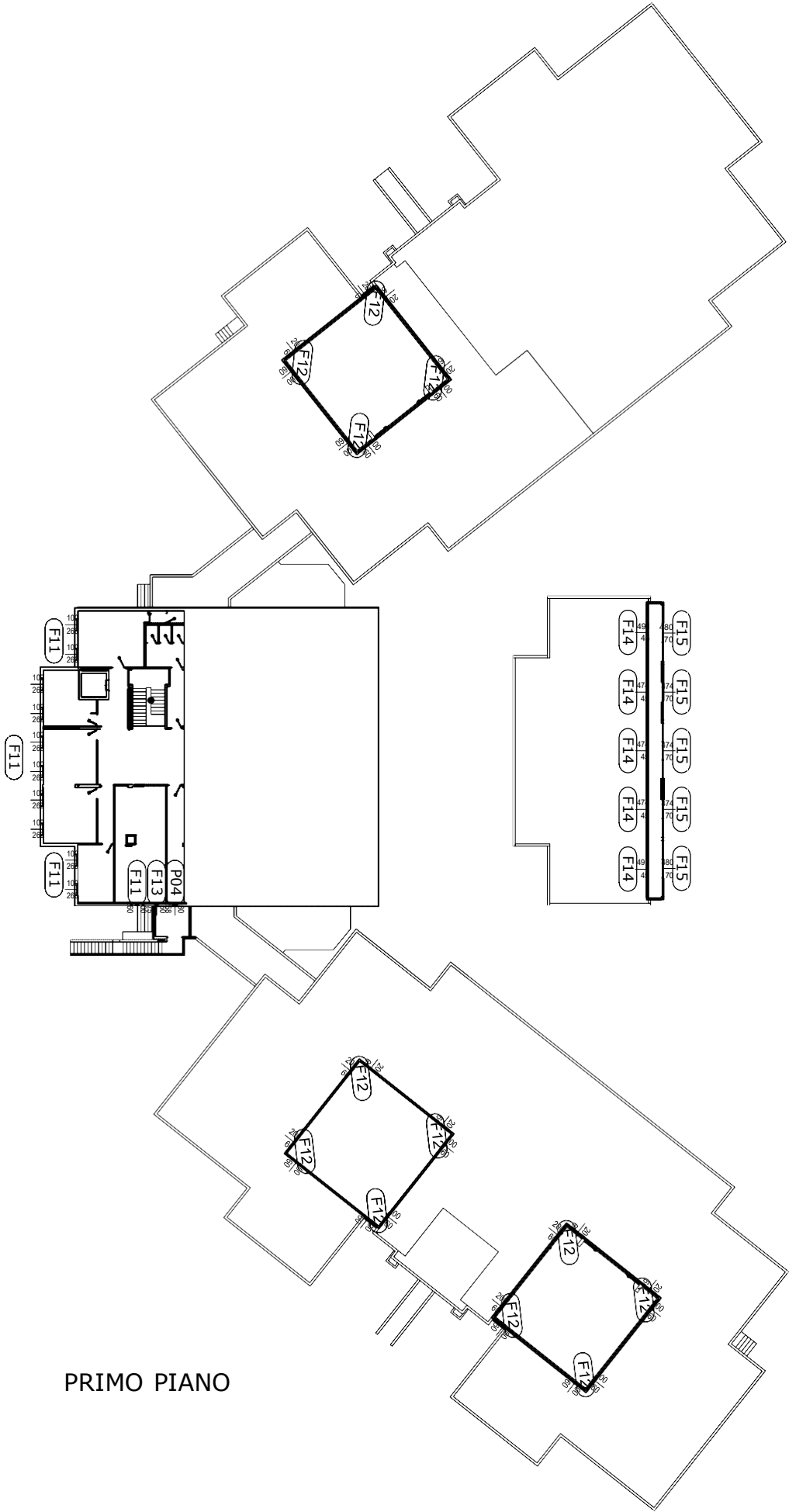
F10 4.74 x 0.65h



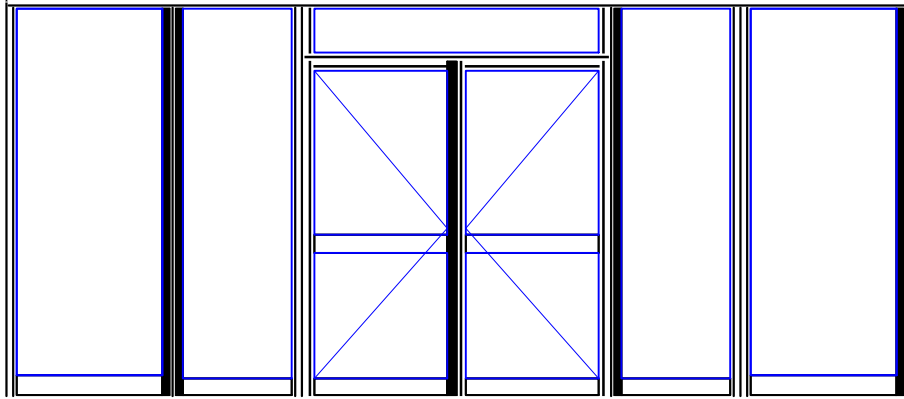
P01 4.74 x 2.60h



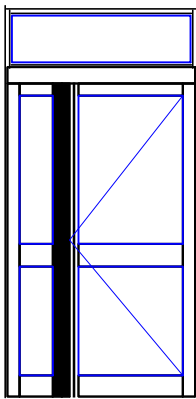
P02 1.76 x 2.56h



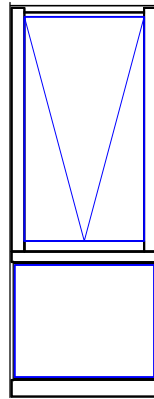
PRIMO PIANO



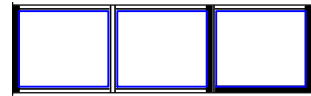
P03 6.00 x 2.60h



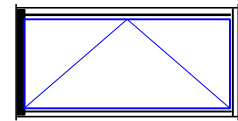
P04 1.30 x 2.58h



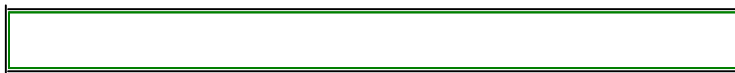
F11 1.00 x 2.60h



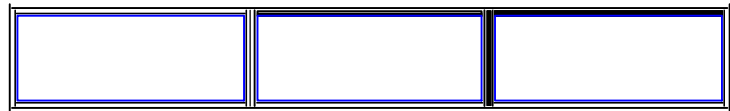
F12 2.00 x 0.60h



F13 1.50 x 0.75h



F14 4.91 x 0.45h



F15 4.80 x 0.70h